



# INVESTIGATE

UNCOVER MORE ACTIONABLE INSIGHTS





# INVESTIGATE

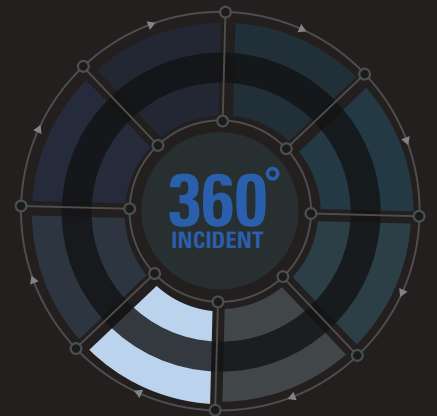
## SOLVE MORE CRIME, FASTER

CommandCentral Investigate is a powerful cloud-based investigative analytic tool that gives you instant access to visually insightful data from across local and nationwide databases, as well as 10,000 public sources, all in an easy-to-use interface.

Quickly identify emerging crime trends, effortlessly communicate intelligence across your agency and track down leads — empowering everyone to fight crime smarter.

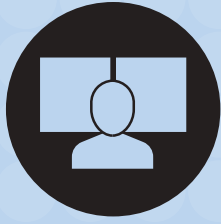
### AS CRIME CONTINUES TO CHANGE AND EVOLVE, YOU NEED THE RIGHT TECHNOLOGY TO FIGHT IT.

CommandCentral Investigate is built to leverage more data, working seamlessly with your Motorola Solutions CAD and RMS systems. Spot emerging crime patterns and trends within and beyond your jurisdiction using millions of interjurisdictional records. Additionally, you can access billions of public records from over 10,000 sources to further aid your investigations. CommandCentral Investigate's cloud based software-as-a-service (SaaS) model is cost effective and reliable. New features and capabilities are introduced seamlessly, without down time or interruptions. With two subscription offers, Standard and Plus, you can choose the one that best fits your agency's needs and budget.



### EXPERIENCE THE COMPLETE 360° INCIDENT

**CommandCentral Investigate** is part of an integrated public safety software suite designed to **connect all data**, **heighten collaboration** and deliver the most **complete view** of an incident, from call to case closure.



## CRIME ANALYST

# IMPROVE DATA-DRIVEN OUTCOMES

### EASILY VISUALIZE CRIME TRENDS

Utilize dashboards and maps to understand current crime trends in your jurisdiction, state, and region. Comprehensive dashboard capabilities make visualizing vast amounts of data intuitive and efficient, which in turn helps command staff make more informed decisions. With access to the Public Safety Data Exchange, you can glean helpful insights from public safety data shared from hundreds of agencies across the country.



**With CommandCentral Investigate, you can cut search time down to minutes or even seconds.**

### ROBUST ANALYTIC VISUALIZATIONS

Intuitively present data across dashboards with various graphical widgets and maps to help users quickly and easily interpret vast amounts of data. Explore incidents directly within a dashboard without switching applications to see the details of the underlying crime.

### ADVANCED FILTERING AND REPORTING

Simple, yet extensive controls for defining data parameters allow you to hone in on the data you want to examine, helping you dive deeper into critical data and discover details that might make all the difference in your data-driven policing initiatives.

### PUBLIC DATA SAFETY EXCHANGE (PSDX)

Access millions of records from agencies across the country to help you build a complete picture of individuals, locations and incidents. As the exchange grows with new agencies joining and adding their own data every month, the value of your immediate access to this information grows as well, helping you uncover leads you may not have been able to otherwise.



# MAXIMIZE AGENCY EFFECTIVENESS

## IMPROVE DATA SHARING AND COLLABORATION

Easily share investigative reports and crime trends with other agency users and key stakeholders to keep everyone up-to-date and informed on critical information. Using the software's built-in automated reporting capabilities, you can increase collaboration with outside departments without investing additional reporting time and resources.

### AUTOMATED REPORTING

Automate key dashboard reports and schedule their delivery to any stakeholder, ensuring everyone has timely, updated information for decision-making.

### EASY DASHBOARD SHARING

Investigation or issue-based dashboards can be widely and securely shared with other agency users with just a few clicks, saving valuable time. Other agency personnel can "see what you see" and look at the information in the format that makes the most sense.

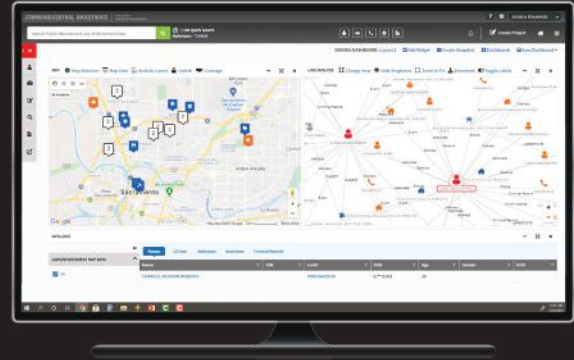
### PRINT-READY REPORTS

Take the valuable insights and information you need with you wherever you go. Quickly create print-ready reports of crime and entities that can be downloaded in a wide variety of formats and easily shared in staff meetings.

# SPEED UP INVESTIGATIONS

## QUICKLY TRACK DOWN LEADS

Take your team's investigative abilities to the next level to quickly and easily find suspects and make arrests. Using advanced searching capabilities, you can access correlated data from multiple sources - without hopping from system to system. Leverage search results to increase investigation efficiency and support your intelligence-led policing initiatives.



### ADVANCED SEARCH WITH TRUSTED RESULTS

Quickly find information on people, vehicles and phone numbers so that raw, mass information can become the intelligence you need to fuel your investigations. With CommandCentral Investigate, you can take your investigation even further by searching businesses and virtual identities to find individuals who might otherwise go under the radar.

### LINK ANALYSIS

Identify non-obvious connections between entities to develop a comprehensive understanding of them. The link analysis tool helps you see connections between persons, addresses, incidents, vehicles and more. For deeper insights into complex relationships, CommandCentral Investigate integrates public records directly into the link analysis tool, helping you map out an even more complete picture.

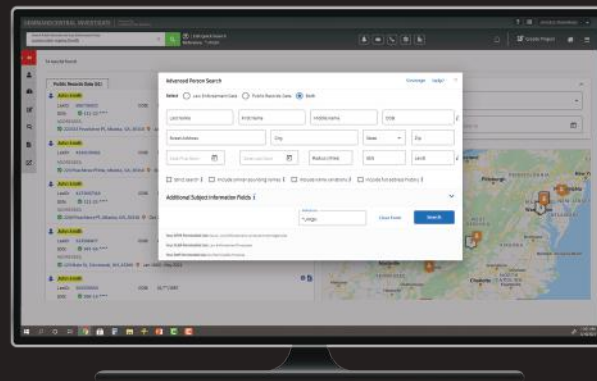
### ACCURINT® FOR LAW ENFORCEMENT

Find the information you need, wherever it may be. CommandCentral Investigate users receive an enterprise-wide license to Accurint for Law Enforcement, a powerful public records search portal powered by LexisNexis® Risk Solutions. This allows your agency to give all necessary users access to public records search without worrying about per-user licenses or per-search costs for searches.

# ACCURINT® FOR LAW ENFORCEMENT

## NEXT GENERATION INVESTIGATION

Take your investigations to the next level using a powerful virtual crime center that links cross-jurisdictional data with public records in one interface. Using Accurint for Law Enforcement through CommandCentral Investigate allows you to access data from your neighboring agencies as well as agencies across the country to build a complete picture of individuals, locations and incidents.



### MORE INFORMATION, FASTER

The public records search portal within CommandCentral Investigate is currently used by over 4,000 federal, state and local law enforcement agencies across the country to provide instant access to a comprehensive database of public records. CommandCentral Investigate provides industry-leading speed and flexibility with streamlined searches that are 45% faster. Developed by experienced law enforcement professionals, it enables agencies to search, access, link, process and analyze the information they need such as:

- Names, addresses and emails
- Death and criminal records
- Professional licenses
- Phone numbers, including possible cell phones
- Bankruptcies, liens and judgments
- Assets, including motor vehicles, watercraft and aircraft
- Real property records
- Social networking information
- Business information, including fictitious names

### ADVANCED LINKING TECHNOLOGY

LexID® is a patent-pending linking technology that takes multiple data sources for each record type and uses advanced business intelligence technology to deliver the information that is most relevant to an investigation. LexID combines data integrity with technology, linking data to make connections and identify relationships with certainty. The power of LexID dramatically increases productivity as well as:

- Employs more precise linking
- Links 270 million identities
- Offers the "Relatives and Associations" linking capability
- Enables agencies to learn from the linkages of other records as relationship links are built
- Links records as they are brought into the system

## PERSON ALERTS

Save valuable time by automating Person Alerts. These alerts provide notifications of changes in the data about an individual without having to repeatedly run the same search. This is particularly useful in older cases that are still under investigation, enabling you to receive information automatically without taking time away from active cases to run multiple manual searches. Person Alerts run automatically once a week and the results display in the Alerts and Notifications window or can be sent via email.

## MOTOR VEHICLE REGISTRATION WILDCARD SEARCH

Query different combinations of motor vehicle data to run matches on partial license plate tags as well as car makes, models and colors. In addition, searches can be run by zip code radius and expanded to wider areas as necessary, helping focus searches that would otherwise return too many results to be useful.

## ADVANCED PERSON SEARCH

Identify individuals when specific information is not available, or when the available information is fragmented or contains errors. Using this powerful feature, you can link records based on partial information and correct errors to create reliable links. The Advanced Person Search allows you to search within the following fields:

- Name (first, last or both) and address
- Street number range
- Other last name (i.e. maiden name)
- Cities and states where an individual previously lived
- Age range
- Relative's last name

## PEOPLE AT WORK SEARCH

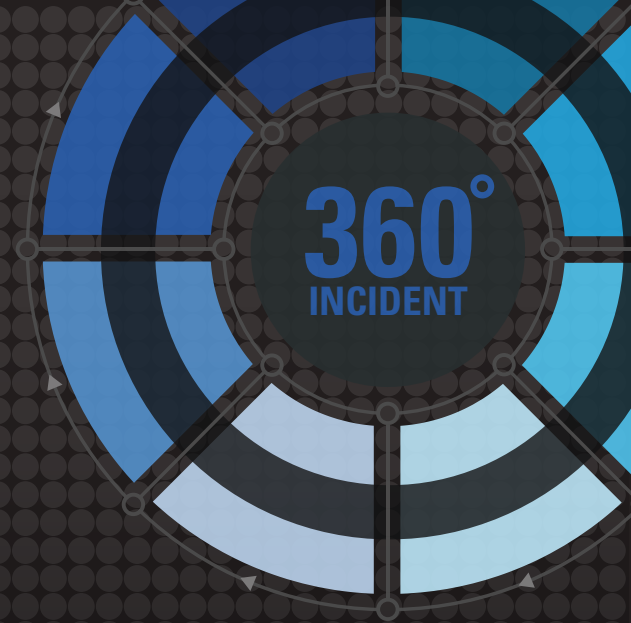
Scan for people connected with businesses, such as officers, directors, small business owners and possible employees, to locate subjects and recover revenue and assets. Unlike most employment searches, the People at Work Search identifies all levels of employees at a company, not just executives and principals. This search can also reveal excessive numbers of businesses at the same address, which can be an indication of fronts for illegal activity.



**CommandCentral Investigate allows you to access data from your neighboring agencies as well as agencies across the country.**

# COMMAND CENTRAL

CONNECTED. COLLABORATIVE. COMPLETE.



## INCIDENT AWARENESS

COMMUNITY ENGAGEMENT



CITIZEN

EMERGENCY CALL MANAGEMENT



9-1-1 CALL TAKER

VOICE & COMPUTER AIDED DISPATCH



DISPATCHER

## INCIDENT MANAGEMENT

REAL-TIME INTELLIGENCE OPERATIONS



INTELLIGENCE ANALYST

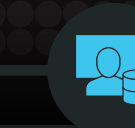
FIELD RESPONSE & REPORTING



FRONTLINE RESPONDER

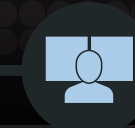
## POST-INCIDENT RESOLUTION

RECORDS & EVIDENCE MANAGEMENT



RECORDS SPECIALIST

ANALYSIS & INVESTIGATION



CRIME ANALYST

JAIL & INMATE MANAGEMENT



CORRECTIONS OFFICER

## THE INDUSTRY'S MOST COMPLETE SOFTWARE SUITE

You depend on solutions that help deliver on the promise of a safer world. CommandCentral Investigate and other applications in our CommandCentral software suite are designed to bring clarity to decisions and simplify collaborative workflows. From call to case closure, CommandCentral connects all data to create actionable intelligence, eliminates barriers to heighten collaboration and delivers the complete, 360° Incident

Our CommandCentral software suite is unified with voice, video and analytics, creating an integrated ecosystem for public safety. Individually, every Motorola Solutions product and service makes the world safer. United, they are exponentially more powerful. Let's build the future of safety together.

For more information about CommandCentral Investigate, please visit:  
[www.motorolasolutions.com/commandcentral-investigate](http://www.motorolasolutions.com/commandcentral-investigate)



Motorola Solutions, Inc. 500 West Monroe Street, Chicago, IL 60661 U.S.A. 800-367-2346 [motorolasolutions.com](http://motorolasolutions.com)

MOTOROLA, MOTO, MOTOROLA SOLUTIONS and the Stylized M Logo are trademarks or registered trademarks of Motorola Trademark Holdings, LLC and are used under license. All other trademarks are the property of their respective owners. © 2022 Motorola Solutions, Inc. All rights reserved. 01-2022 [JP01]